



Blue Seal News Update

Credential Extension

During these challenging times, we know you and your service professionals have a lot on your minds, and we don't want you to worry about expiring ASE certifications. To help with this, ASE has automatically extended any June 30, 2020 expirations to December 31, 2020. At a time like this, a professional credential is even more important, so please encourage your service professionals to visit their myASE account to print a certification status letter showing the updated expiration date. If you require a certificate, please reach out to our customer service department at contactus@ase.com for assistance

Like many folks today, our staff is working from home, but we are ready and able to answer any questions or just talk. We want you to know that ASE, and all our industry partners, appreciate your service and commitment to professionalism as our transportation infrastructure needs you more than ever.

Your health and well-being are a top priority for all of us at ASE. So, please stay safe, follow the guidance from the [Centers for Disease Control \(CDC\)](#) at home and work, and know that you have the full support of ASE as you keep the motoring public going.

Sincerely,
Tim Zilke,
President & CEO
ASE

Brad Pellman,
Treasurer
Pellmans' Automotive Inc.

Bobby Bassett,
Chair
Gates Corporation

Glen Nicholson,
Secretary
TBC

Mark Polke,
Vice Chair
Robert Bosch LLC

Tom Trisdale,
Past Chair
Toyota Motor North America



App for A1-A9

Are you looking for a way to stay ASE certified in these challenging times? The **new Mobile ASE Renewal App for the Automobile Test Series (A1-A9)** allows you to remain certified without ever going to a test center to complete a recertification test. From your smartphone or personal computer, you can now keep your certifications current and valid at your own pace.

→ New subscribers to the Mobile ASE Renewal App, who are currently Automobile series ASE certified, also now receive a one-time, 6-month extension when you subscribe by June 30, 2020.

Here's how it works:

You can sign up for a FREE 3-day trial at ASErenewalapp.com. If you like what you see, subscribe and you'll get one question per area, per month sent to your phone, tablet or desktop computer. Get 8 questions correct and **your certification will be extended by 1-year beyond the initial 6-month extension date**. Continue answering questions each month after you get 8 per area correct to grow your knowledge! Keeping certified and learning from the questions as you go – yes, you get to see the answers and with full explanations -- will help you stay sharp and engaged with technology in each test series.

Today, the nationally recognized ASE certification proves your professionalism, knowledge, and value more than ever! Please stay safe, continue to follow the guidance from the [Centers for Disease Control \(CDC\)](https://www.cdc.gov) at home and work, and know that you have the full support of ASE as you keep the motoring public going.



Webinars

ASE is planning a series of free webinars for our ASE Certified technicians as well as instructors at ASE Accredited training programs, and we would like your help.

Here is what we have in mind:

What:

Hour-long webinar sessions hosted by ASE, with varied technical content presented by trainers from industry partners like you who have repair and service information to share. The topic would be chosen by you from popular training you already have prepared, and the presenting partner would change each week.

Who:

The audience may vary from week to week with the topic: Automobile, Truck, or Collision Repair. ASE will send out the invitations and Techs and instructors would sign up for any sessions they want to attend.

When:

Mondays for Instructors at 4 pm Eastern/1 pm Pacific, with the same topic repeated at the same time that same week on Friday for Technicians. Each one-hour session would include around 45 minutes of content, leaving about 15 minutes for Q-and-A, and be recorded for replay on the ASE page on YouTube.

We plan to start the series later this month, and will be promoting these events to thousands of instructors and hundreds of thousands of technicians. This is great opportunity to showcase your company's commitment to continuing education and support for the folks on the front line of our industry.

Ready to sign up? Have questions?

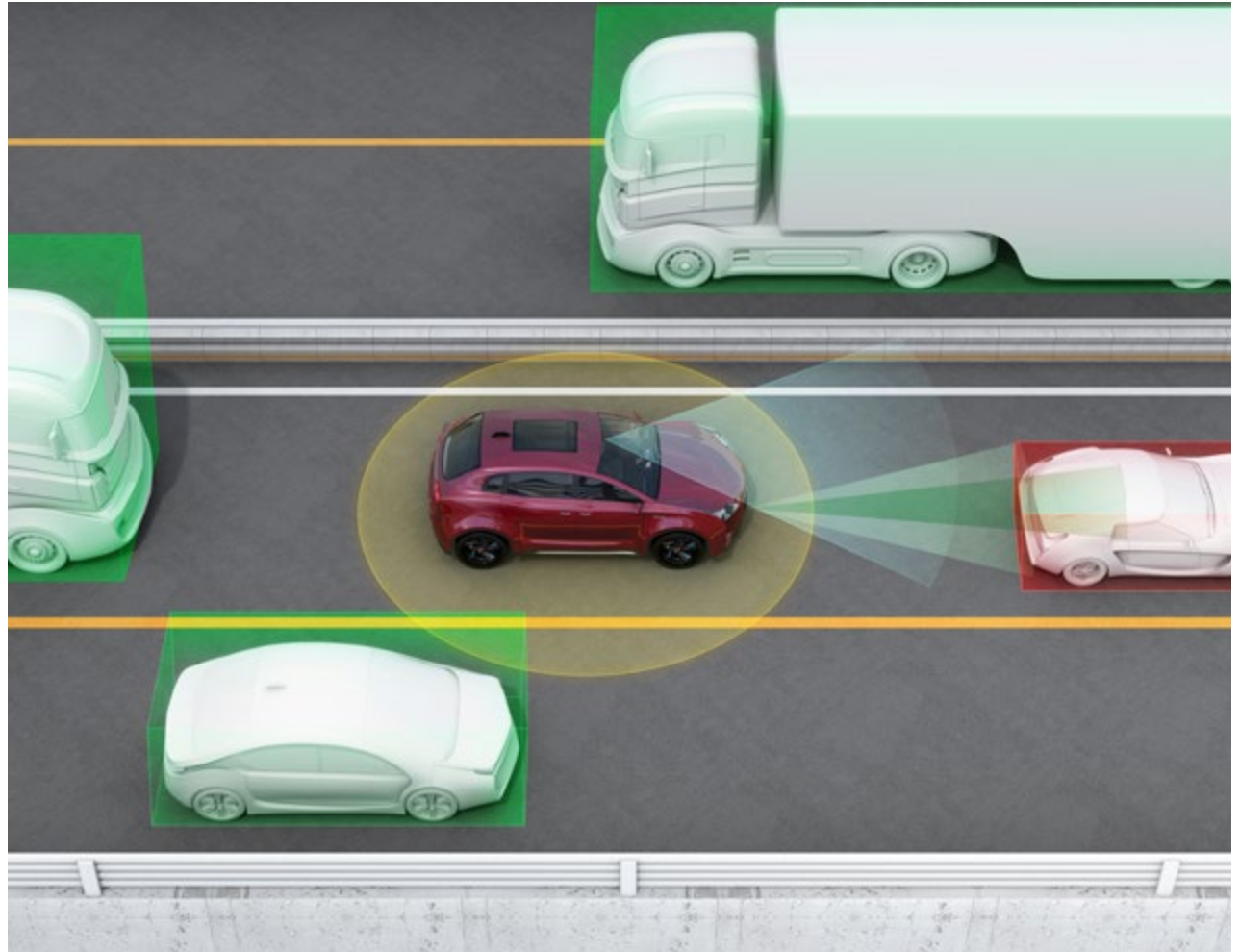
Email Dave Cappert at dcappert@ase.com and to get the ball rolling.



On Deck: Advanced Driver Assistance Systems

Advanced Driver Assistance Systems (ADAS)

ASE held an industry conference and subsequent job analysis workshop that will lead to the development of an **ADAS credential** and define how we will assess technicians for the competencies required when working with **Advanced Driver Assistance Systems**. Because of the safety issues associated with these systems, the ASE Board wants technicians to have access to a credential, developed by an independent third-party, that validates their knowledge of the skills required to diagnosis, repair, replace and calibrate vehicles with advanced driver assistance systems.



ASE Training Managers Council

The ASE Training Managers Council (ATMC) will hold their Annual Conference September 22-24, 2020 in Atlanta, Georgia. The Council is a group of about 180 individuals responsible for managing training at their OEM or Aftermarket firm. The group gathers on a periodic basis to network and use their collective knowledge to look into the future of how people learn and help each other structure their training for that future. One highlight of the conference is the review of the ATMC Training Benchmarks Survey. Conducted annually and utilizing the responses of thousands of participating service professionals, the survey is one of the most comprehensive in the industry and helps training managers keep their training aligned with the needs of working professionals. You can learn more about the ATMC at www.atmc.org.



Important Online Resources

All External Links

ASE Customer Service
703-669-6609

ASE Test Registration Info
[ASE.com/Register](https://www.ase.com/Register)

Training Resources
[ASE.com/AccreditedTraining](https://www.ase.com/AccreditedTraining)

ASE Webinars
[YouTube.com/ASEcampus](https://www.youtube.com/ASEcampus)

Test Prep, Study Guides, Practice Tests, Testing Tips, and Demos
[ASE.com/TestPrep](https://www.ase.com/TestPrep)

myASE "How-To" Demos
[ASE.com/myASEdemos](https://www.ase.com/myASEdemos)

ASE Consumer Webpage
[ASE.com/Drivers](https://www.ase.com/Drivers)

ASE Store
[ASEstore.com](https://www.asestore.com)

The EPA – Authorized Section 609 Program
[ASE.com/609](https://www.ase.com/609)

Find a Seat BEFORE You Register and Pay
[ASE.com/FindASeat](https://www.ase.com/FindASeat)

Find the test center closest to you
[ASE.com/TestCenters](https://www.ase.com/TestCenters)

ASE Education Foundation
[www.ASEeducationFoundation.org](https://www.aseeducationfoundation.org)

ASE Training Managers Council
[www.ATMC.org](https://www.atmc.org)

